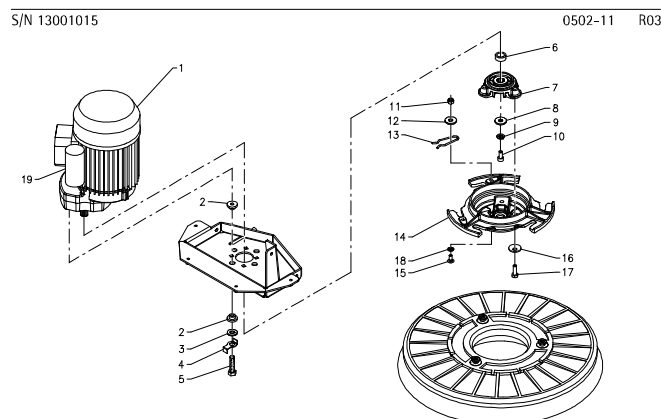
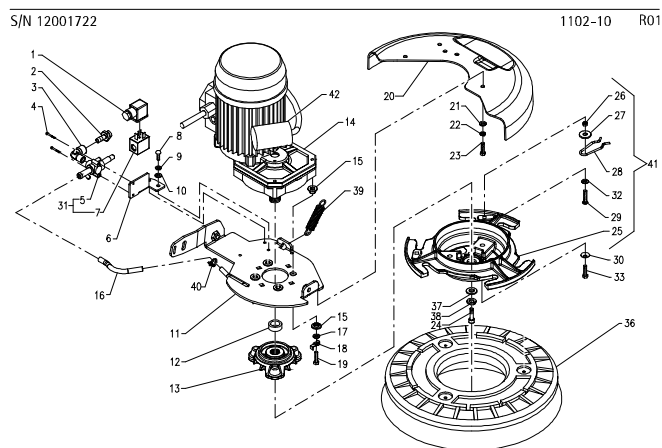




Technical modifications and updating of the spare parts catalogues suitable for our scrubbing machines at 230V

→ Starting from serial number: 12001722 dated 21/05/12 (**baby e**, table 1102-10 R01, pos. 18)
13001015 dated 15/03/13 (**ruby 50e**, table 0502-11 R03, pos. 4)

We have had some cases where, because of the vibrations, the screws that fix the geared motor to the brush base loosened themselves. We intervened replacing dowels and nuts with screws and by inserting safety washers between the screw heads and the brush base. With this modification it is not necessary anymore to block the screws with blocking glue.



Ref. tables **ruby 45e – ruby 55e**: E0510-20 R02 and E0510-30 R00

We have added the missing position of the O-rings assembled in front of the straight fitting (pos. 26).

→ Starting from serial number:

13001334 dated 04/04/13 (**ruby 45e – ruby 55e**, table E0509-10 R02)

13001007 dated 14/03/13 (**ruby 50e**, table 0509-10 R02)

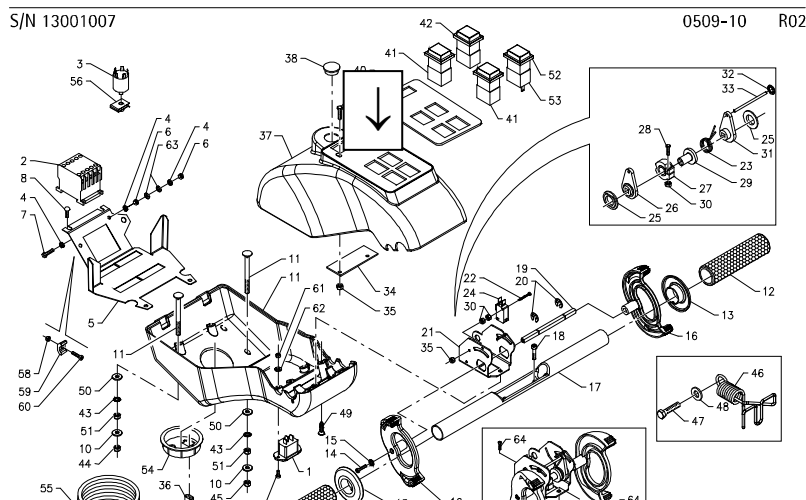
During some tests carried out we have verified that the label of the instrument board could get damaged near the two upper switch housings risking to enter in contact with electric parts. To avoid this problem we have realized a new cover having four holes instead of six ones. For spare parts the new cover can be sent in place of the previous one.

Take off: 49201020 handle bar cover

49201050 handle bar cover black

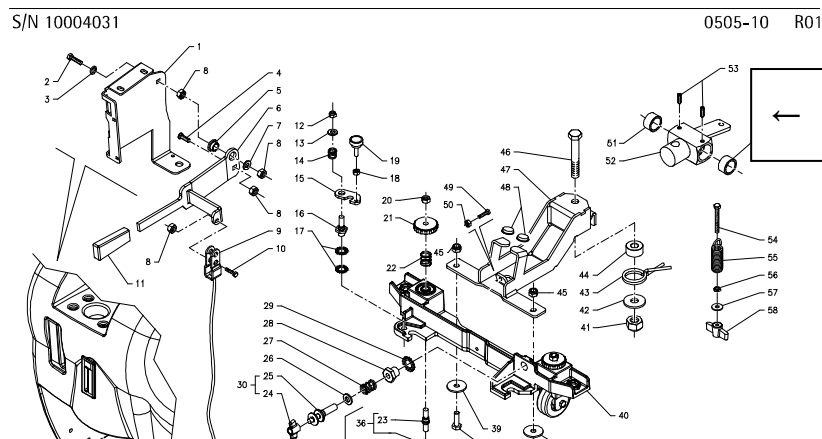
Add: 49205030 handle bar cover 4 holes

49205040 handle bar cover 4 holes black



→ Starting from serial number: 13001004 dated 13/03/13 (**ruby 50e**, table 0505-10 R01, pos. 52)

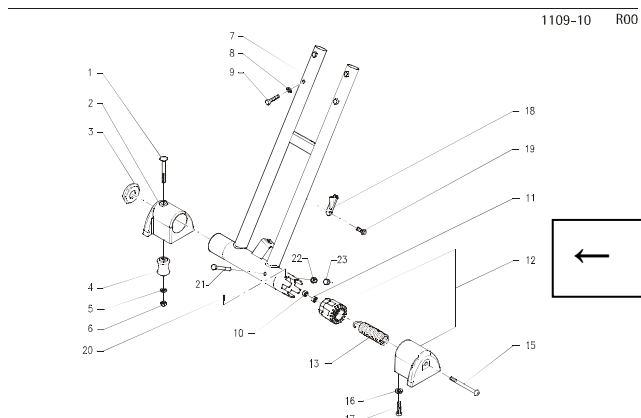
We have verified that in some cases the articulated joint with the square end did not permit a perfect oscillation of the arm. We have modified the joint and the lower profile of the arm to improve its oscillation in any working position. The new parts are interchangeable with the previous ones.



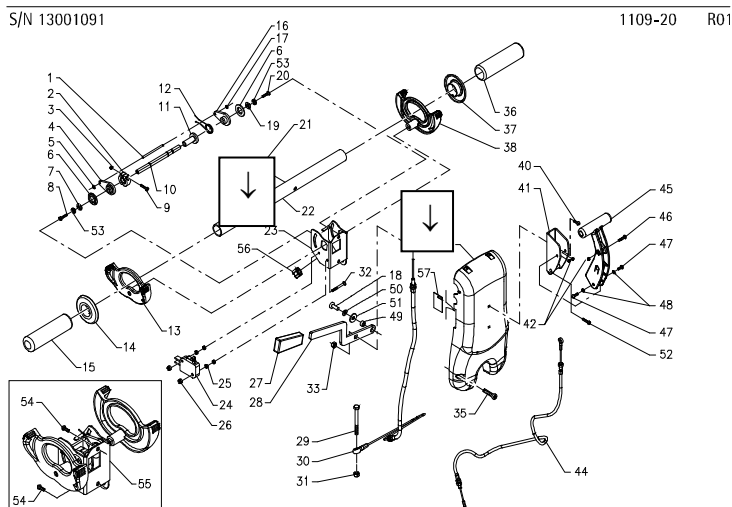
➔ Starting from serial number: 13002524 dated 03/07/13 (**baby e**, table 1109-10 R00, pos. 12)

The profile of the coupling teeth between the left support and the toothed terminal (V1009010) has been modified.

3



We have updated table 1109-20 R01 of **baby e**, adding the pos. 56 and 57.



Shortly, there will be a new inner rubber holder for the squeegee on **baby e**.

It happened sometimes that the front squeegee rubber in some points was not sufficiently blocked and due to the friction with the floor it tended to slip off partially. To avoid this inconvenience, we have modified the inner rubber holder adding more gripping teeth. The new rubber holder is interchangeable with the previous one.



On request the updated tables.

At your disposal for additional explanations, we remain

with best regards

ADIATEK SRL

Technical dept.

Amore